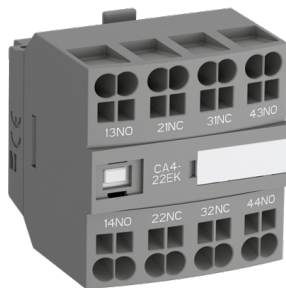




 PRODUCT-DETAILS

CA4-31EK

CA4-31EK Auxiliary Contact Block



General Information

Extended Product Type:	CA4-31EK
Product ID:	1SBN010146R1031
EAN:	3471523131286
Catalog Description:	CA4-31EK Auxiliary Contact Block
Long Description:	CA4-31EK is a 4-pole front mounted auxiliary contact block equipped with Push-In Spring terminals. CA4-.E version offers terminal assortment matching the marking of 3-pole AF26(Z)(B)..96-30-00, AF40..96-30-11, AFC26..38-30-00, 4-pole AF09(Z)(B)..80-40-00 / AFC09..38-40-00 or AF09(Z)(B)..80-22-00 / AFC09..38-22-00 contactors. CA4-31EK is available with 3 N.O. and 1 N.C. instantaneous contacts for standard industrial environments. With the Push-in Spring terminals, one push is all you need for a faster than ever installation, an easier than ever wiring and a reliable as ever connection.
Display Name:	CA4-31EK

Ordering

Minimum Order Quantity:	1 piece
Customs Tariff Number:	85389099

Popular Downloads

EPLAN Data:	9AAC167263_EPLAN
Data Sheet, Technical Information:	1SBC100214C0202
Instructions and Manuals:	1SBC101054M6801
Instructions and Manuals (Part 2):	1SAC200017M0002
CAD Dimensional Drawing:	2CDC001079B0201

Dimensions

Product Net Width:	43 mm
Product Net Depth / Length:	39.5 mm
Product Net Height:	45 mm
Product Net Weight:	0.05 kg

Technical

Number of Auxiliary Contacts NO:	3
Number of Auxiliary Contacts NC:	1
Number of Poles:	4P
Standards:	IEC/EN 60947-5-1, UL 60947-5-1, CSA C22.2 No. 60947-5-1-14
Rated Operational Voltage:	Auxiliary Circuit 690 V
Rated Frequency (f):	Auxiliary Circuit 50 / 60 Hz
Conventional Free-air Thermal Current (I _{th}):	acc. to IEC 60947-5-1, $\theta = 40\text{ °C}$ 16 A
Rated Operational Current AC-15 (I _e):	(500 V) 2 A (690 V) 2 A (24 / 127 V) 6 A (220 / 240 V) 4 A (400 / 440 V) 3 A
Rated Operational Current DC-13 (I _e):	(24 V) 6 A / 144 W (48 V) 2.8 A / 134 W (72 V) 1 A / 72 W (110 V) 0.55 A / 60 W (125 V) 0.55 A / 69 W (220 V) 0.27 A / 60 W (250 V) 0.27 A / 68 W (400 V) 0.15 A / 60 W (500 V) 0.13 A / 65 W (600 V) 0.1 A / 60 W
Rated Short-time Withstand Current Low Voltage (I _{cw}):	for 0.1 s 140 A for 1 s 100 A
Rated Insulation Voltage (U _i):	acc. to IEC 60947-5-1 690 V acc. to UL/CSA 600 V
Rated Impulse Withstand Voltage (U _{imp}):	6 kV
Maximum Electrical Switching Frequency:	(AC-15) 1200 cycles per hour (DC-13) 900 cycles per hour
Maximum Mechanical Switching Frequency:	3600 cycles per hour

Connecting Capacity Auxiliary Circuit:	Flexible with Ferrule 1/2x 0.5 ... 2.5 mm ² Flexible with Insulated Ferrule 1/2x 0.5 ... 1.5 mm ² Flexible 1/2x 0.5 ... 2.5 mm ² Rigid Solid 1/2x 1 ... 2.5 mm ²
Wire Stripping Length:	Auxiliary Circuit 10 mm
Degree of Protection:	acc. to IEC 60529, IEC 60947-1, EN 60529 Auxiliary Terminals IP20
Terminal Type:	Push-in Spring Terminals
Suitable For:	AF09 AF09Z AF16 AF16Z AF26 AF26Z AF30 AF30Z AF38 AF38Z AF40 AF52 AF65 AF80 AF96 AFC09 AFC16 AFC26 AFC30 AFC38 AF09B AF09ZB AF16B AF16ZB AF26B AF26ZB AF30B AF30ZB AF38B AF38ZB AF40B AF52B AF65B AF80B AF96B
Product Name:	Auxiliary Contact Block

Technical UL/CSA

Connecting Capacity Auxiliary Circuit UL/CSA:	Rigid Solid 1/2x 18-14 AWG
--	----------------------------

Material Compliance

Conflict Minerals Reporting Template (CMRT):	9AKK108467A5658
REACH Declaration:	2CMT2021-006202
RoHS Declaration:	2CMT2021-006277
RoHS Information:	Following EU Directive 2011/65/EU and Amendment 2015/863 July 22, 2019
Toxic Substances Control Act - TSCA:	2CMT2023-006525
WEEE B2C / B2B:	Business To Business

WEEE Category: 5. Small Equipment (No External Dimension More Than 50 cm)

Certificates and Declarations

ABS Certificate:	ABS_20-2060694-PDA
BV Certificate:	BV_2634H24900C1
CB Certificate:	SE-118824
CCC Certificate:	CCC_2024010305648906
Declaration of Conformity - CCC:	2020980304001258 2020980304001259
Declaration of Conformity - CE:	1SBD250007U1000
Declaration of Conformity - UKCA:	1SBD250038U1000
DNV Certificate:	DNV_TAE00001BV-5
LR Certificate:	LRS_LR23403517TA-02
RMRS Certificate:	RMRS_1802703280
UL Certificate:	UL-US-L252354-131-82119002-7 UL-CA-L252354-331-82119002-6

Container Information

Package Level 1 Units:	box 1 piece
Package Level 1 Width:	46 mm
Package Level 1 Depth / Length:	46 mm
Package Level 1 Height:	46 mm
Package Level 1 Gross Weight:	0.05 kg
Package Level 1 EAN:	3471523131286

External Classifications and Standards

Object Classification Code:	K
ETIM 7:	EC000041 - Auxiliary contact block
ETIM 8:	EC000041 - Auxiliary contact block
ETIM 9:	EC000041 - Auxiliary contact block
eClass:	V11.0 : 27371302
UNSPSC:	39121522
IDEA Granular Category Code (IGCC):	4743 >> Auxiliary contact block
E-Number (Finland):	3708039
E-Number (Sweden):	3210649

Categories

Products > Low Voltage Products and Systems > Control Products > Contactors > Block Contactors

